

WWW.MONTANACOLLEGEFAIRS.COM

CENTRAL

DRIVING DIRECTIONS . PARKING . MAPS .

REGION

VISIT US ONLINE FOR MORE HELPFUL RESOURCES
WWW.MONTANACOLLEGEFAIRS.COM



CENTRAL REGION

PHYSICAL ADDRESS | LOCATION OF FAIRS

COLLEGE FAIR	REGION	LOCATION	ADDRESS
BOZEMAN	CENTRAL	Montana State University Strand Union Ballroom	751 West Grant Street, Bozeman, MT 59715
LIVINGSTON	CENTRAL	Park Senior High School Gym	102 View Vista Drive, Livingston, MT 59047
BILLINGS	CENTRAL	MSU Billings Gym	1500 University Drive, Billings, MT 59101
LEWISTOWN	CENTRAL	Fergus County High School, Lewistown Fairgrounds	1000 US-191, Lewistown, MT 59457
GREAT FALLS	CENTRAL	University of Providence, McLaughlin Center	1301 20th Street South, Great Falls, MT 59405
CONRAD	CENTRAL	Conrad High School Gym	308 Illinois Street, Conrad, MT 59425

DIRECTIONS TO THE BOZEMAN FAIR

DRIVING DIRECTIONS:

- **DIRECTIONS:**

- **Fair Location:** MSU Bozeman Campus @ the Strand Union Ballrooms |
- **Bozeman, Montana is location on I-90. Two interstate exits will bring you to the campus of Montana State University in Bozeman.**
- **If you take exit 309 from the east onto main street,** proceed west to Willson Avenue and turn left. Willson will curve slightly, and you will hit Kagy Boulevard. Turn right and continue to South 7th Avenue and continue to the parking garage.
- **From west,** take exit 305 onto 19th Avenue and follow it south to Kagy Boulevard (approximately 3.5 miles). Turn left onto Kagy and continue to South 7th Avenue. Turn left and continue to the parking garage.
- **The SUB is north of the parking garage.** You are welcome to pull into the SUB to unload your car, and then go park, so you don't have to carry all your supplies from your parked car. Parking lots are marked on the map included. Thank you!

- **PARKING INFORMATION AND INSTRUCTIONS:**

- ***New This Year!*** This year, the campus has changed their parking policies to where we are unable to reserve a lot for the fair. Therefore, you are welcome to use the included map to pick the parking lot you would like to park. Each parking lot has a meter to pay for your parking.
- **Pay Your Own Parking | Parking Garage Parking |** You will need to pay to park here. This is the closest parking to the SUB & Fair. If you park in the "Pay Lot" spaces that are located in the parking garage, please be sure to pay at kiosks before coming into the fair. ***The are several parking options on campus.*** The closest parking is in the Campus Parking Garage across from the Strand Union Building (SUB) where the fair is hosted.
- **REMINDER:** DO NOT PARK IN RESERVED OR IN 30 MINUTE SPACES, OR YOU WILL BE TICKETED/TOWED!
- **RECOMMENDATION!** Please arrive to this fair early as nearly 17,000 students are attending classes throughout the day so parking is competitive.

***VISUAL MAP ON THE FOLLOWING PAGE**

BOZEMAN





To Willson Avenue



Non-emergencies call 994-2121

Directions to the Livingston Fair

Driving directions:

- Livingston is 29 miles from Bozeman (about 30 minutes).
- **Parking Information and Instructions:**
 - Park at the in the high school parking lot. There is no permit or fee required.

Start: Bozeman @ Montana State University

End @ Park High School | 102 View Vista Dr | Livingston, Mt 59047

1: Start out Going NORTH toward W HARRISON ST. Go 0.1 miles

2: Turn RIGHT onto W HARRISON ST. Go 0.1 miles

3: Turn LEFT onto S 8TH AVE. Go 0.6 miles

4: Turn RIGHT onto W MAIN ST/US-191. Go <0.1 miles

5: Turn LEFT onto N 7TH AVE/I-90 BL W. Go 1.1 miles

6: Merge onto I-90 E. Go 25.6 miles

7: Turn left onto W Park St

8: Turn right onto N Main St

9:: N Main St turns slightly left and becomes View Vista Dr

Destination will be on the right | Total Est. Time: 33 minutes Total Est. Distance: 29.87 miles

***Visual Map on the Fol lowing Page**

LIVINGSTON



Directions to the Billings Fair

Driving directions:

- Billings is 116 miles from Livingston (approximately 2 hours)

Parking Information and Instructions:

- Only place to park is Cisel parking lot. Arrive early to plan for a little walk to the gym. South of our tennis dome and reps can use the tunnel under 27th to get to the gym. Do not park in reserved, special, or quick stops, or you will be ticketed. Also, you will want to arrive early for parking due to campus students parking as well. No parking permit is needed.

Start: Livingston @ Park Senior High School , 102 View Vista Dr
End: Billings @ Montana State University Billings Gym

- 1: Start out Going NORTHEAST on VIEW VISTA DR toward SLEEPING GIANT ST. Go 0.1 miles*
- 2: Turn LEFT onto SLEEPING GIANT ST. Go <0.1 miles*
- 3: Turn RIGHT onto SE ST. Go 0.4 miles*
- 4: Turn RIGHT onto E PARK ST/U-S 89-/I 90 BL. Continue to follow- I 90 BL. Go 3.3 miles*
- 5: Merge onto- I 90 E. Go 107.3 miles*
- 6: Take the 27th Street Exit- EXIT 450*
- 7: Stay on 27th St –go through downtown and start up the hill towards the airport*
- 8: Just past the last stoplight on Poly Dr. turn Left into the campus parking lot*
- 9: To cross 27th St to get to the gym, use the tunnel underneath the street that is located by the tennis dome. Use the lower doors, go up the ramp and an elevator will be there to haul materials to 2nd floor where gym is located*
- 10: End At MSU Billings Gym, Billings, MT 59101*

Total Est. Time: 1 hour, 47 minutes Total Est. Distance: 116.39 miles

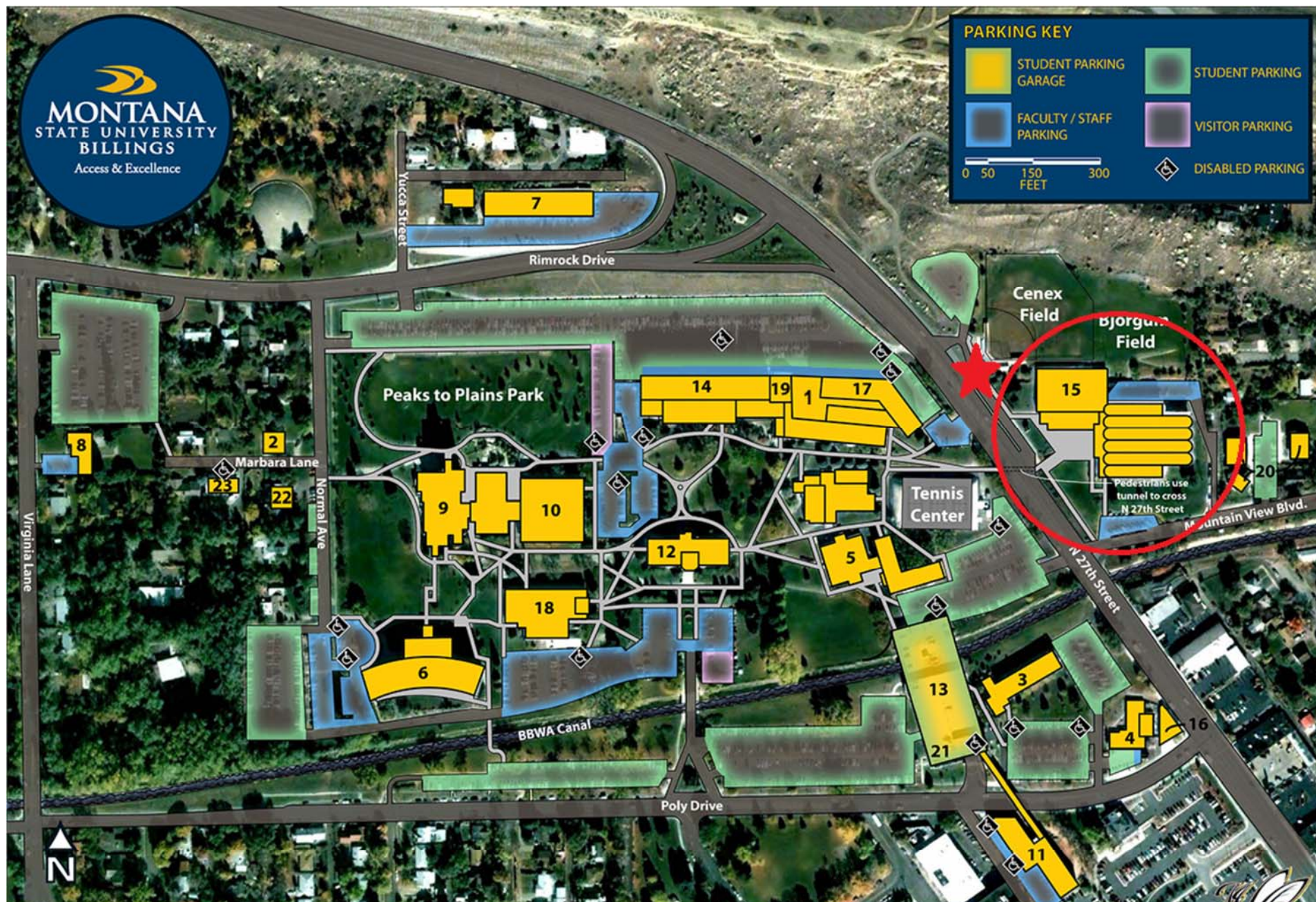
****Visual Map on the Following Page!***

A map of the Montana State University Billings area. The map shows several streets including N 27th St, N 26th St, N 25th St, N 24th St, N 30th St, N 31st St, Virginia Ln, Normal Ave, Poly Dr, Grandview Blvd, Ash St, Elm St, Pine St, and Rimrock Rd. Key landmarks include Montana State University Billings, Tennis Courts, Rodeway Inn, 406 Kitchen & Taproom, and City Brew Coffee. A red pin is placed on N 27th St, labeled "MSU Billings Rec Activities". The map also shows the Yellowstone River and the Chief Black Otter Trail.



PARKING KEY

STUDENT PARKING GARAGE	STUDENT PARKING
FACULTY / STAFF PARKING	VISITOR PARKING
0 50 150 300 FEET	
DISABLED PARKING	



BUILDING KEY

- | | | | | | |
|----------------------------|-------------------------|--------------------------|---------------------------------|----------------------------------|---|
| 1. Academic Support Center | 4. Art Annex | 8. Foundation House | 12. McMullen Hall | 16. Poly Building | 20. Student Family Housing |
| 2. Alumni/Guest House | 5. Cisel Hall | 9. Liberal Arts Building | 13. Parking Garage | 17. Rimrock Hall | 21. University Police & Parking |
| 3. Apsaruke Hall | 6. College of Education | 10. Library | 14. Pattee Hall | 18. Science Building | 22. William R. Lowe Daycare and Enrichment Center |
| | 7. Facilities Services | 11. McDonald Hall | 15. Physical Education Building | 19. Student Union Building (SUB) | 23. Yellowstone Public Radio (KEMC-FM) |



Directions to the Lewistown Fair

Driving directions:

- Lewistown is 129 miles from Billings (approximately 2 hours and 30 minutes)

Parking Information and Instructions:

- Proceed through the parking area to the front of the Trade Center Building. It is the modern looking building right inside the fence from the parking area. Presenters can unload directly in front of the Trade Center (no stairs!) and then return their cars to the parking area. We will once again try to have student help available with unloading.

Start: Billings @ Montana State University Billings Gym
End: Lewistown @ Fergus County Fair Grounds, 1000 US Highway 191

1: You need to take Hwy 87 North out of Billings from N. 27th Street.

3: Take N. 27th St. and follow to Airport Rd.

4: Turn RIGHT onto Airport Rd. and follow EAST until you reach Main St.

5: Veer LEFT onto Main St. (near the MetraPark) which turns into Hwy. 87

Go 45.0 miles

6: Turn LEFT onto US-87/MT-200.

Go 30.8 miles

7: When you reach Lewistown, turn right at 1st Avenue (This is at the first traffic light).

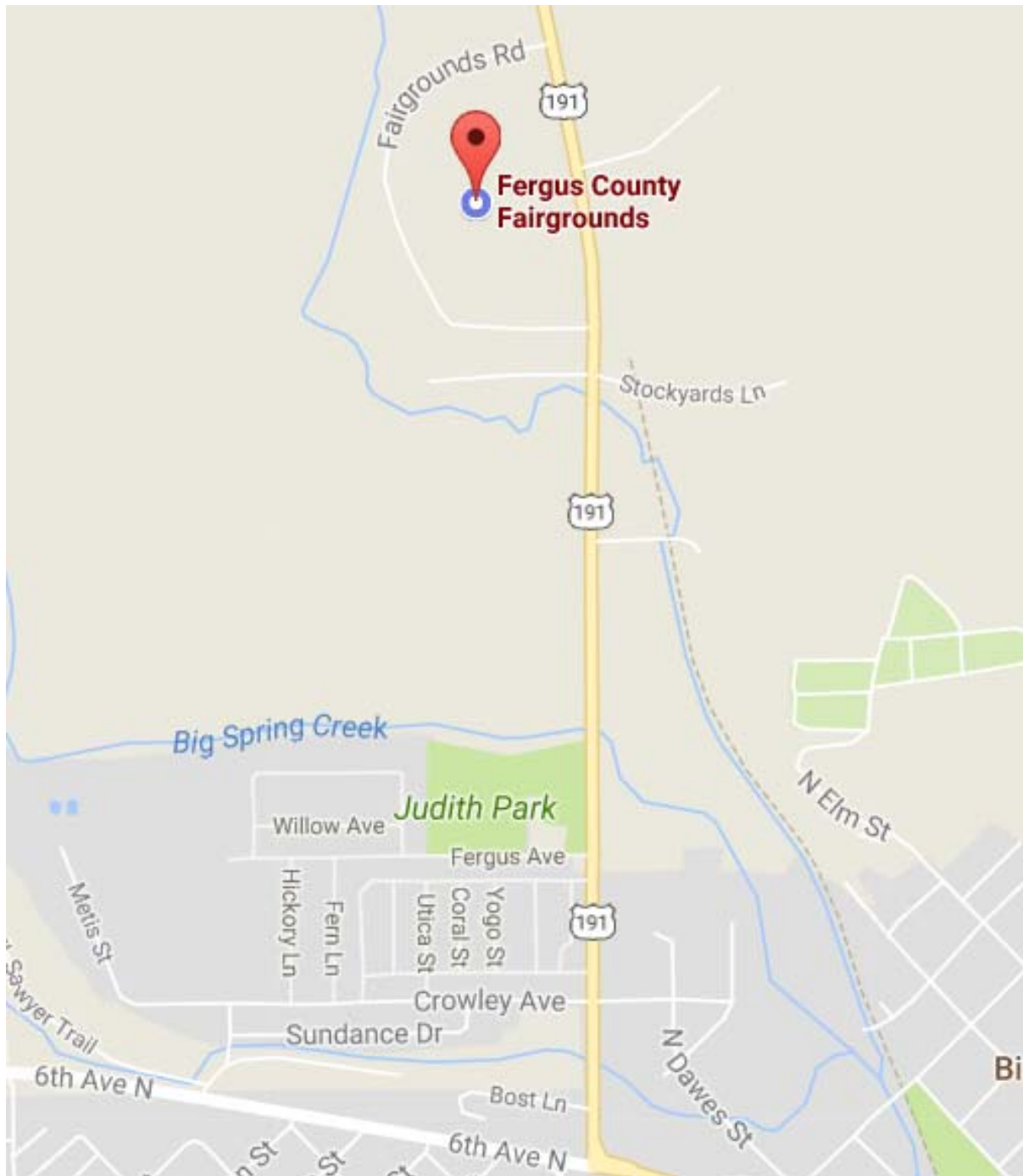
8: Then turn right on to US Highway 191 (highway to Malta – there is a flashing yellow light at this intersection)

9: Proceed approximately 1 mile to the Central Montana Fairgrounds on the left.

Total Est. Time: 2 hours, 30 minutes Total Est. Distance: 129.45 miles

***Visual Map on the Following Page!**

LEWISTOWN



Directions to the Great Falls Fair

Driving directions:

- Great Falls is 105 miles from Lewistown (approximately 1 hour and 45 minutes)

Parking Information and Instructions:

- Parking is free and abundant in the lot adjacent to the McLaughlin Center.

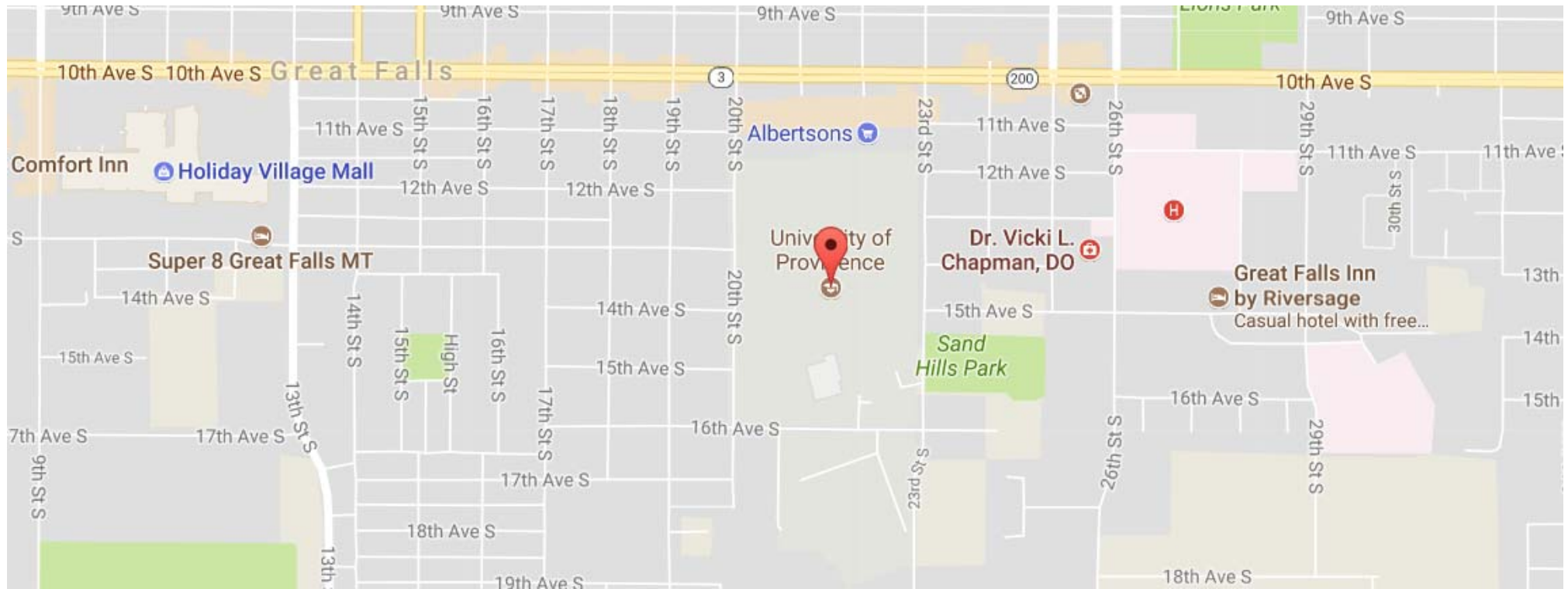
Start: Lewistown @ Fergus County Fair Grounds, 1000 US Highway 191
End: Great Falls @ The University of Providence (formerly University of Great Falls), 1301 20th St S

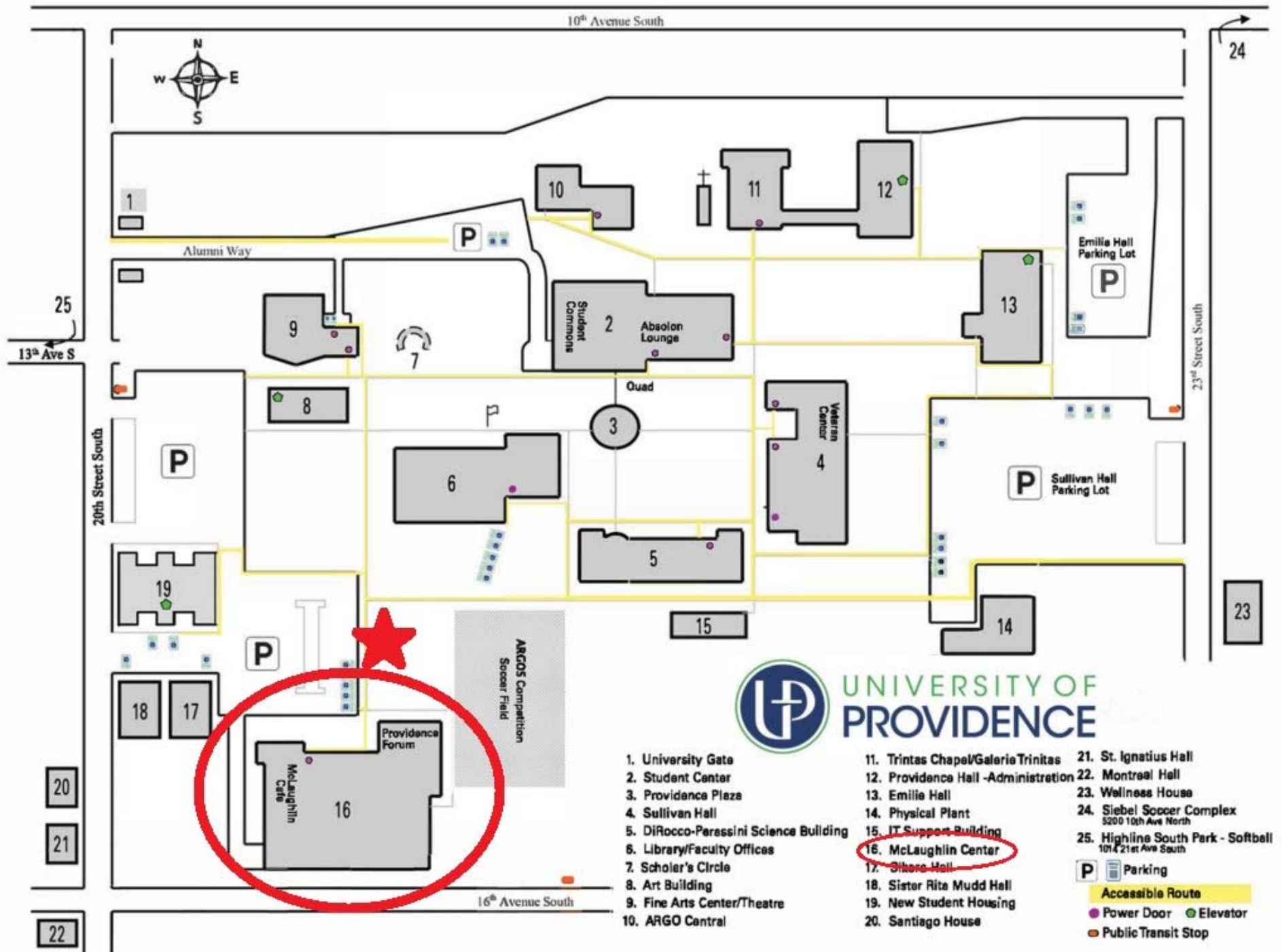
- 1: Turn Right out of Fergus County Fair Grounds onto Highway 191.
- 2: Turn LEFT onto 1st AVE
- 3: Turn RIGHT onto W MAIN ST/US-87/US-191/MT-200 toward Great Falls.
- 4: Continue to follow US-87 N/MT-200 W. ---- Go 102.9 miles
- 5: Once you reach Great Falls, follow 10th Ave. So. until you reach 20th St.
- 6: Turn LEFT onto 20TH ST S. and follow it to the parking lot for the McLaughlin Center (on your left)
- 7: End @ University of Providence, 1301 20th St S, Great Falls, MT 59405

Total Est. Time: 1 hour, 45 minutes Total Est. Distance: 104.07 miles

***Visual Map on the Following Page!**

GREAT FALLS





Directions to the Conrad Fair – NEW Location!

DRIVING DIRECTIONS:

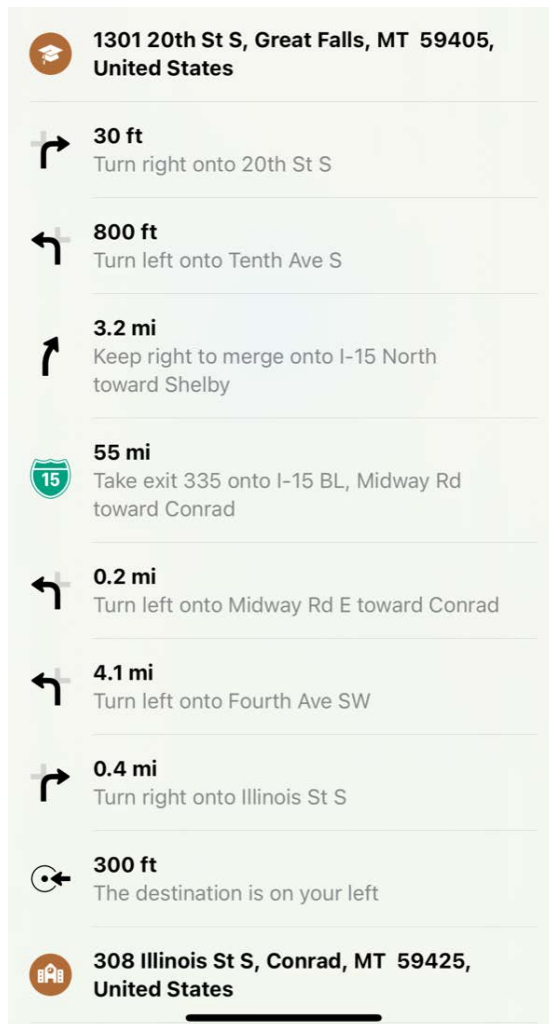
- Conrad is 60 miles from Great Falls (approximately 1 hour)

PARKING INFORMATION AND INSTRUCTIONS:

- Fair Exhibitors - Drop Off site: Michigan Street behind High School Gym. You will then move your car to the tennis courts to the north of campus. No parking pass is needed.
- Bus Parking: Drop off Michigan Street behind High School gym. Move buses to designated parking on tennis courts, north of campus. Will be marked accordingly.

START: GREAT FALLS @ UNIVERSITY OF GREAT FALLS, 1301 20TH ST S

END: CONRAD @ CONRAD HIGH SCHOOL, 308 S. ILLINOIS



***VISUAL MAP ON THE FOLLOWING PAGE!**

CONRAD MAP

